

FACT PATCH ONLY AND SPLICE/PATCH CHASSIS

Contents

1.	General product information	1	5.2.	Dismounting FACT chassis.....	2
2.	Warnings and caution	1	6.	Routing of patch cords	3
3.	Product image	2	7.	Removing an adapter	6
4.	Kit content	2	8.	Trademarks	6
5.	Mounting FACT chassis in rack	2	9.	Contact Information	6
5.1.	Mounting FACT chassis	2			

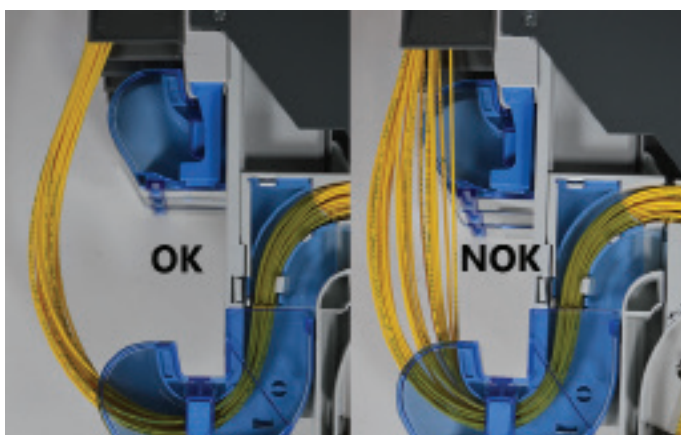
1. General product information

The FACT patch only and splice/patch chassis are designed respectively for cross connect and inter connect applications. They are available with SC-adapters, LC-duplex-adapters and E2000 adapters.

The FACT patch only and splice/patch chassis accommodate 24 SC-connections or E2000-connections per element, or 48 single LC-connections per element.

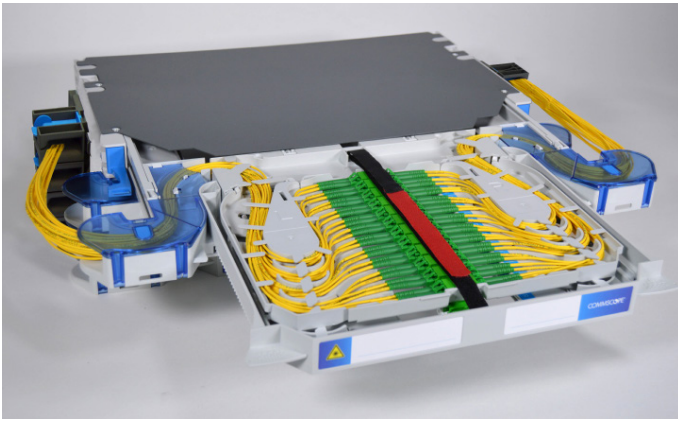
2. Warnings and caution

- Fiber optic cables may be damaged if bent or curved to a radius that is less than the recommended minimum bend radius. Always observe the recommended bend radius limit when installing fiber optic cables and patch cords.
- Exposure to laser radiation can seriously damage the retina of the eye. Do not look into the ends of any optical fiber. Do not assume the laser power is turned off or that the fiber is disconnected at the other end.



- Pay attention to the routing of the patch cords. These should move/hang freely, where they leave the bend control. If you see that there is tension occurring on the patch cords, please reroute these.

3. Product image



Note: FACT element patch only with LC-adapters shown as example.

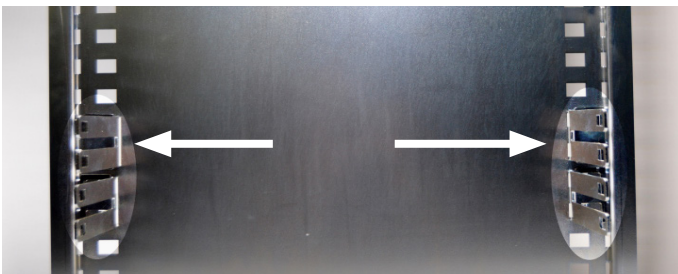
4. Kit content



- FACT element p/p or s/p
- Brackets
- Color coding labels
- Smouvs
- Transparent pockets with labels

5. Mounting FACT chassis in rack

5.1. Mounting FACT chassis



5.1.1. Prepare the rack with the brackets on the position where you want to install the FACT chassis (by sliding them in).



5.1.2. Take the FACT chassis with both hands and align with the brackets on both sides.



5.1.3. Slide the FACT chassis into the fingers until you hear a "clicking noise".

5.2. Dismounting FACT chassis



5.2.1. Open upper drawer (releasable). This one is marked at the front (blue marking at the bend control).

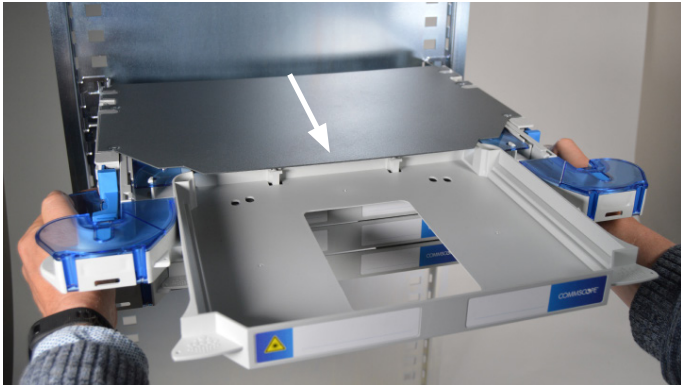
Note: empty drawer is shown.



5.2.2. Pull the blue puller locks (make sure both sides -left & right- are in the unlocked position).

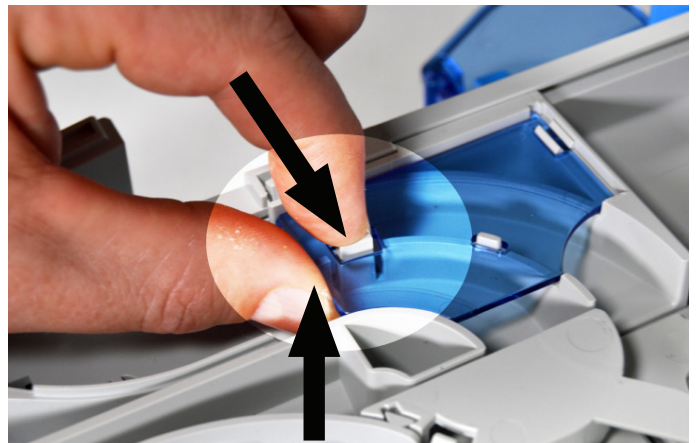


6.2. The retaining feature can be opened (hinged back) if additional space is needed (optional).



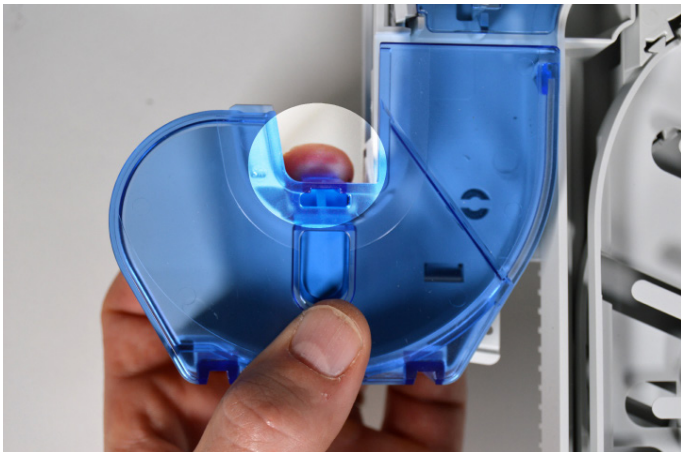
5.2.3. Slowly slide the FACT chassis out (pull simultaneously on both sides, with both hands).

Note: empty drawer is shown.



6.3. Open the back lid by pushing the snap feature to the inside and then lifting the lid.

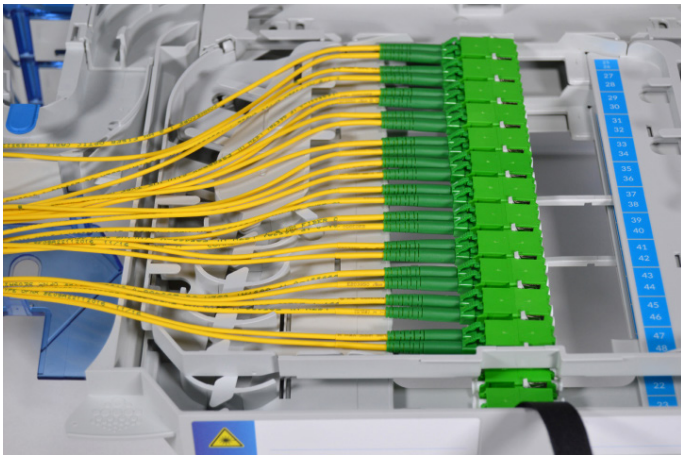
6. Routing of patch cords



6.1. Open the bend control cover. Unlatch the snapping feature (on the backside of the bend control) as shown.



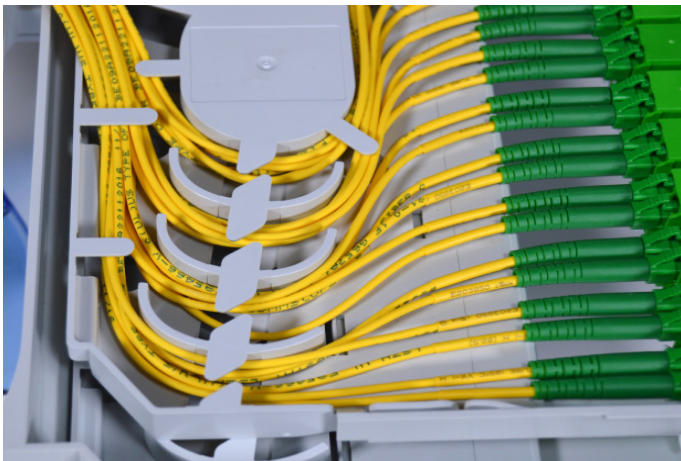
6.4. Remove the velcro and the dust caps. Clean all connectors before patching. Start patching at the bottom (LC as example).



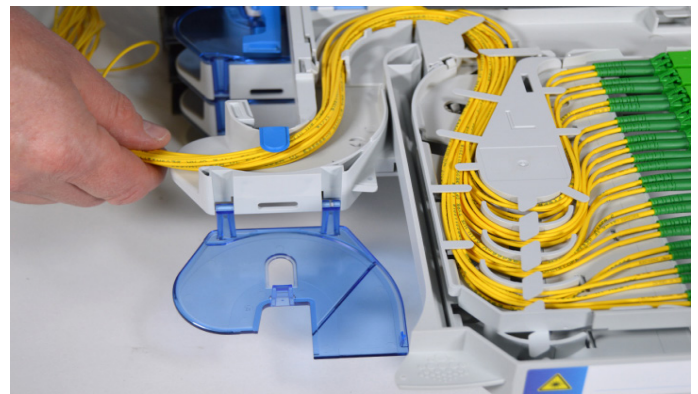
6.5. Work your way upward (LC-solution as example).



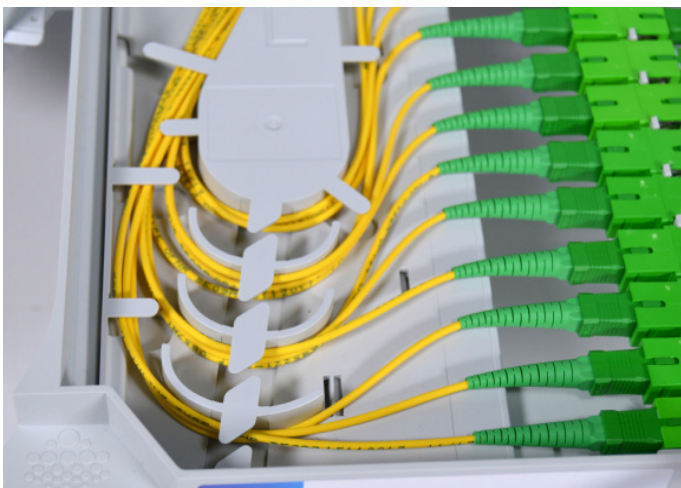
6.7. Carefully guide the patch cords through the channel.



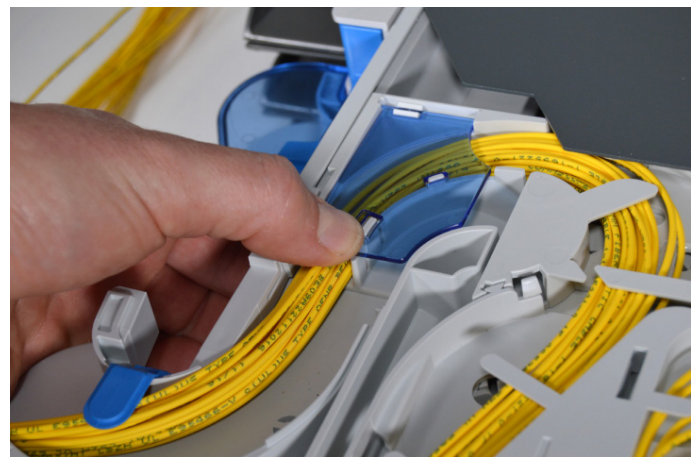
6.6.1. Guide 6 patch cords per bend control for LC-solutions.



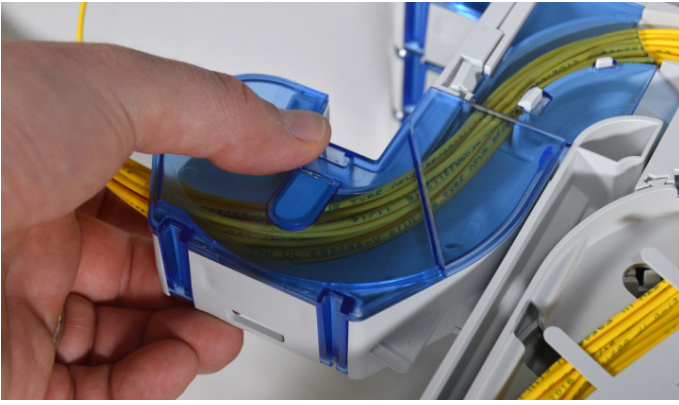
6.8. Guide the patch cords further through the channel, under the retaining feature (push it down if opened) and through the bend control.



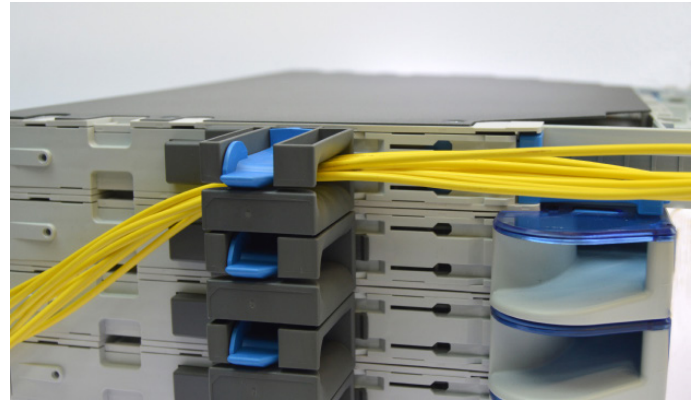
6.6.2. Guide 3 patch cords per bend control for SC-solutions.



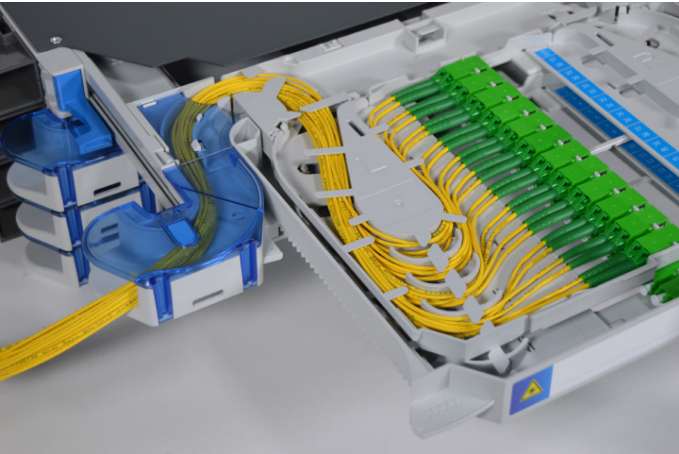
6.9. Carefully close the back lid.



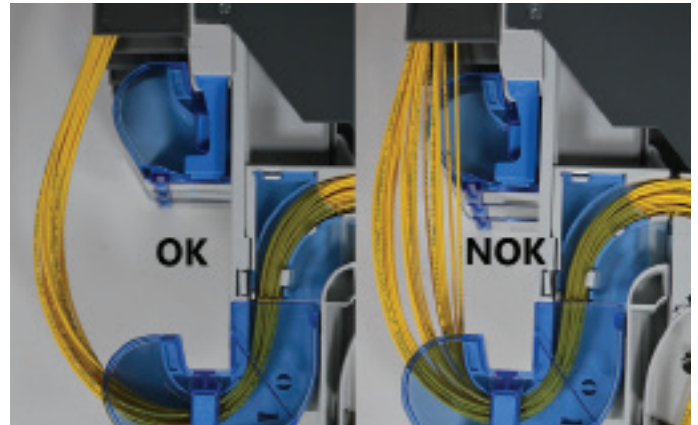
6.10. Close the bend control cover (retaining feature down).



6.13. Guide the patch cords all the way through.



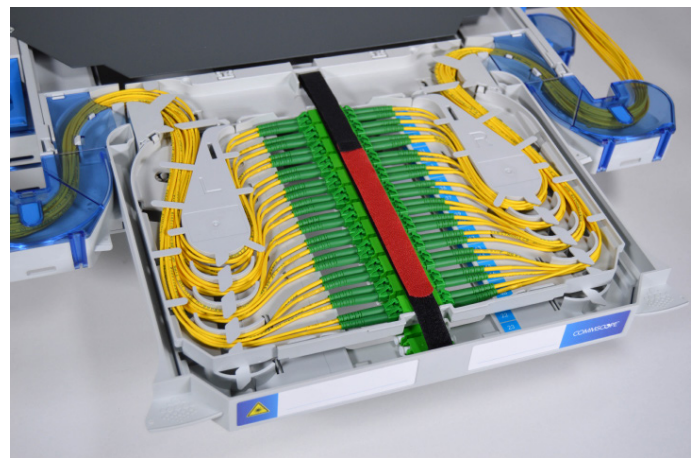
6.11. The guiding should look as pictured above.



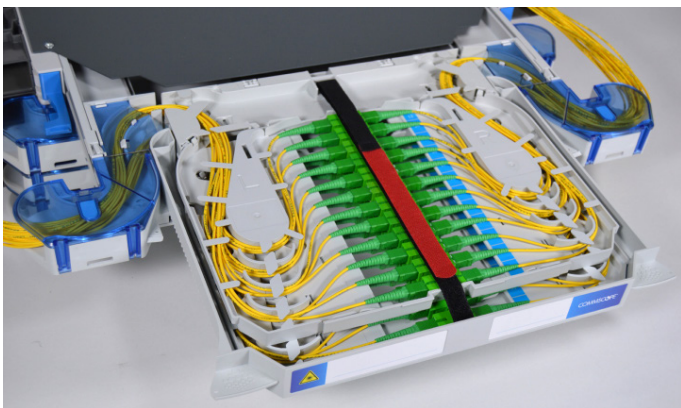
6.14. Before closing the drawer, pay attention to the patch cord routing.



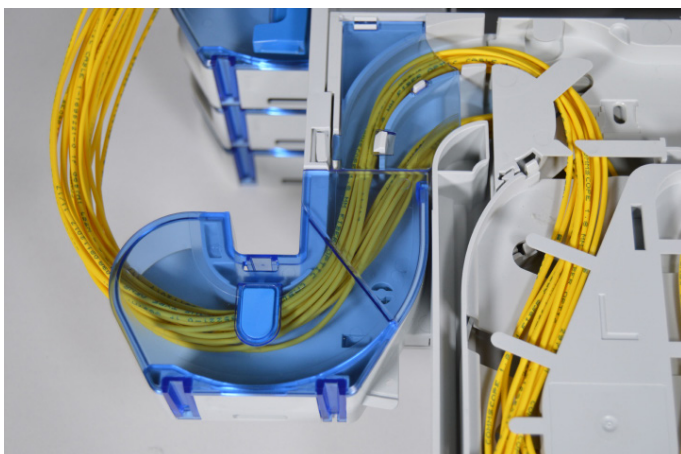
6.12. Start guiding the patch cords through the trumpet.



6.15.2. Repeat needed steps (6.3 - 6.14.) for the other side. LC-solution as example. Place the velcro back.

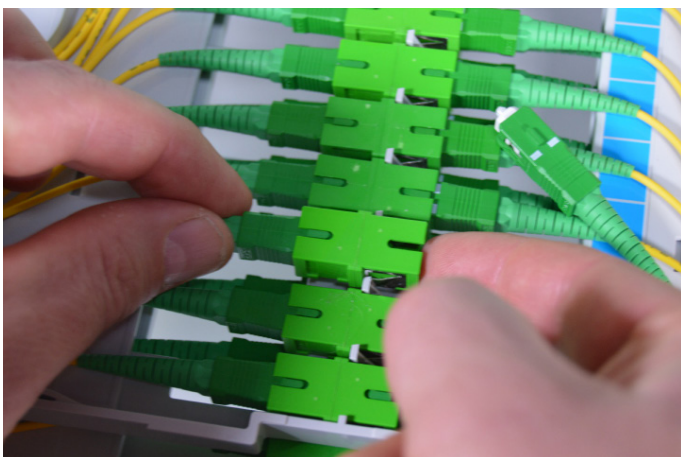


6.15.2. SC-solution as example.

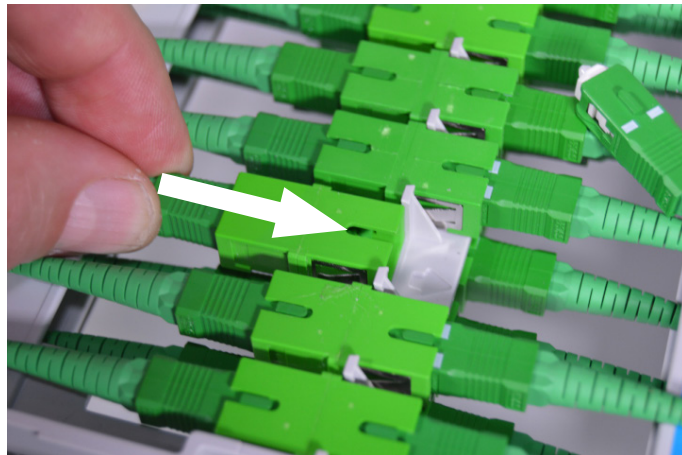


Note: When top and bottom tray are filled, the patch cords should be routed as illustrated (back bend control).

7. Removing an adapter



7.1. Adapters can be taken out of the tray (to change the adapter or to make the cleaning process easier). Carefully pull the adapter upward to remove it.



7.2. To reinstall the adapter. Align the adapter between the T-shaped walls, with the adapter in the correct direction. Slide them in (direction of the arrow) until you hear a “clicking sound”.

8. Trademarks

All trademarks identified by ® or ™ are registered trademarks or trademarks, respectively, of CommScope, Inc. This document is for planning purposes only and is not intended to modify or supplement any specifications or warranties relating to CommScope products or services. CommScope is committed to the highest standards of business integrity and environmental sustainability, with a number of CommScope’s facilities across the globe certified in accordance with international standards, including ISO 9001, TL 9000, and ISO 14001.

Further information regarding CommScope’s commitment can be found at www.commscope.com/About-Us/Corporate-Responsibility-and-Sustainability.

9. Contact information

Visit our website or contact your local CommScope representative for more information.

For technical assistance, customer service, or to report any missing/damaged parts, visit us at: <http://www.commscope.com/SupportCenter>

This product may be covered by one or more U.S. patents or their foreign equivalents. For patents, see www.cs-pat.com